

Siegbert Spohr GmbH

GIESSEREIBEDARF + FÖRDERBANDROLLEN

Am Korreshof 1-3
D- 40822 Mettmann
<https://www.spohr-gmbh.de>
<https://www.tragrollen24.de>

Telefon +49 (0) 2104 70374
Telefax +49 (0) 2104 82550
E-Mail info@spohr-gmbh.de
USt-IdNr.: DE177079130

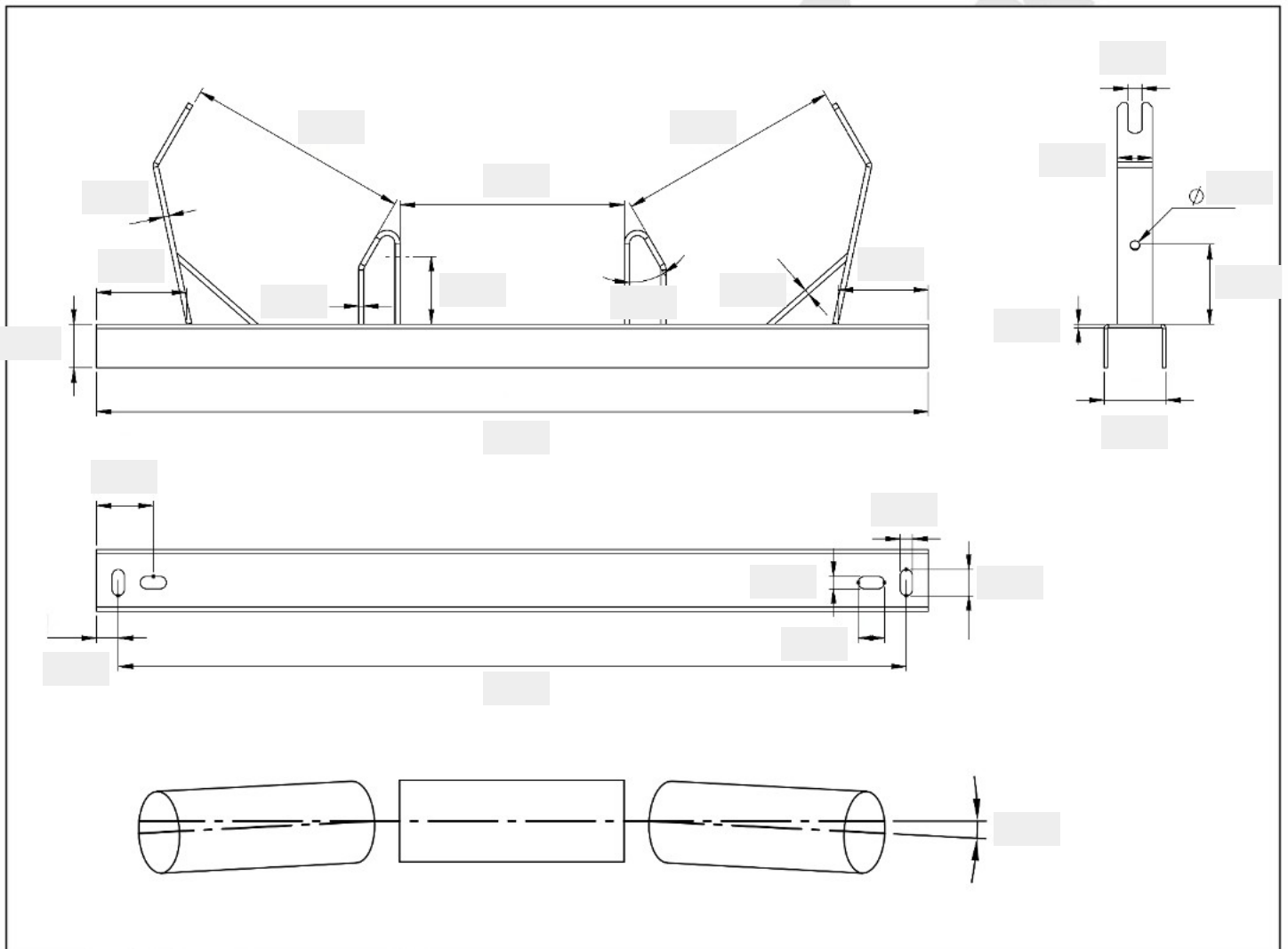
Questionnaire Station

for 3-roll trougher station

quantity

Dimension

Note: Please provide as much information as possible.
If you have any questions, we're here to help.



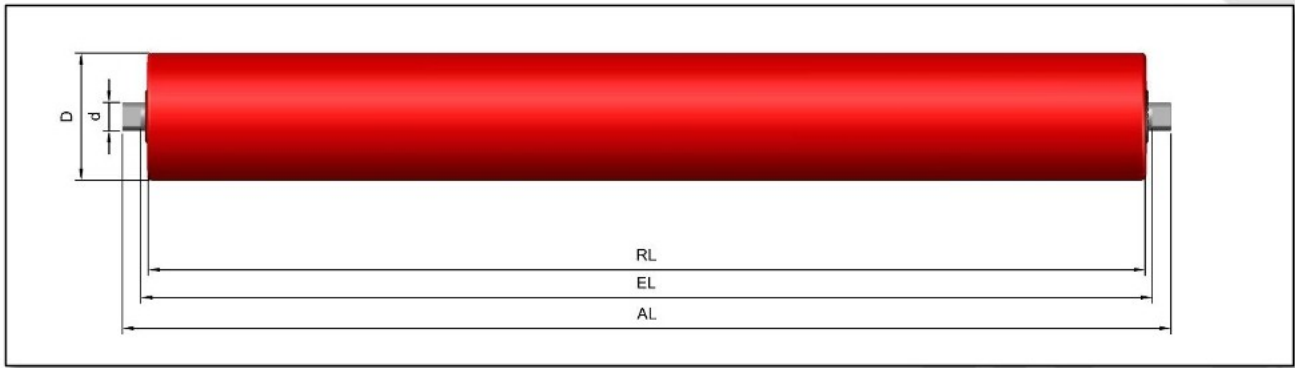
Material

galvanized grounded stainless-steel

Offer should include rollers : yes no

If „yes“, quantity of rollers :

Dimension Rollers



- All rolls have the same dimensions
- The side rollers (rollers 1 and 3) have different dimensions than roller 2 (the center roller)

roll 2 (center roll)

roller-Ø D	roll length RL	axis-Ø d	clamping length EL	axis length AL

flat-open

The flat-open shaft end is shown in a 3D perspective view and a 2D cross-sectional view. The 2D view labels the length as L and the width as SW .

internal thread

The internal thread shaft end is shown in a 3D perspective view and a 2D cross-sectional view. The 2D view labels the length as L and the internal thread diameter as IGM .

Dimension of the shaftends:

SW: mm

IG: M

L: mm

Sieglob

www.sieglob.de

roll 1 & 3 (left + right roll, optional)

roller-Ø D	roll length RL	axis-Ø d	clamping length EL	axis length AL

flat-open

internal thread

Dimension of the shafts:

SW: mm

IG: M

L: mm

non-binding request

Siegbert Spohr GmbH
www.spohr-gmbh.de